



# Moultrie Matters

Moultrie Middle School PTA Newsletter September 2009

645 Coleman Blvd • Mount Pleasant • 29464 • 884-2819 • <http://moultrie.ccsdschools.com> • [moultriepta@gmail.com](mailto:moultriepta@gmail.com)

## OPEN HOUSE

As our children are getting settled into their classes, we, as parents, always look forward to meeting their teachers. This year, we also have the added excitement of touring our children's beautiful new school. We will all have that opportunity on Thursday, September 17th at 6:00 pm at the Moultrie Middle School Open House.

The format for the Open House will

be different this year. All parents should report directly to their child's Homeroom where you will view a brief video presentation of the PTA budget and then vote on the budget by paper ballot. (The budget will be e-mailed out ahead of time, and any questions will be submitted directly to the PTA Treasurer. More information will follow in an e-mail.) After voting, parents will then follow their child's



schedule in order to meet all of your child's teachers. We will be as time-efficient as possible at the Open House; however, please allow ample time to spend in each class and to move between classes.

## THE PRINCIPAL PERSPECTIVE

By Jean Siewicki, Principal

Welcome back to a wonderful school year in a fantastic school building! We



are thrilled with the facility and are so very fortunate to have the partnership with the Town of Mt. Pleasant. Thank you parents, for all you have done to help us open. Without the generous time and energy of parent volunteers we could not have unpacked, moved furniture, completed bulletin boards, or assembled furniture on time for the first day of school. The parent volunteers have been countless and I appreciate all of you.

As the flagship school of the district, we are always open to new ideas and innovation that benefit students. Two such possibilities are open to us, but we need monetary support. My General Operating Budget is approximately \$35,000 for the year. That amount will barely cover paper and copying costs, so we find we have to depend on the generosity of parents to help us with extras.

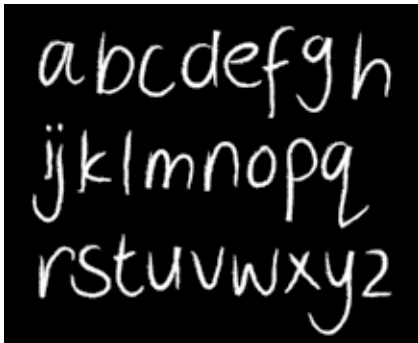
Rein and Shine is an organization that provides our special needs students the opportunity to ride horses. The benefits of this weekly outing are phenomenal for these kids. Some of our students are in wheel chairs and are non-verbal, yet the glee on their faces as they sit in the saddle is priceless. Horses, by nature, are extremely sensitive to human emotions. As a result, this type of therapy and intervention is unlike any other. We need to raise \$1,500 for transportation.

The second opportunity for students is through the South Carolina Arts Commission to provide unique arts opportunities for 80 students during exploratory classes. Last year, we had one class of African drumming for 20 students during the last nine weeks. This year, the Arts Commission is offering us three artists: Fode, our African Drummer, could spend the entire second semester with us; a quilting and costume batik artist will spend nine weeks teaching her style of batik to students; and the final artist could be either a theatre director or an African Dancer to teach students. All of these will culminate in performances for students, parents and the public during Piccolo Spoleto. We need monetary help with \$7,000 to cover the matching grant for these programs.

As always, any questions or help we can provide you in the education of your student is a phone call away.

## Message From MMS PTA President

By Lisa Nuzum,  
MMS PTA President



What a school! Thanks to Mrs. Siewicki for all her endless hours of work and attention to details. Her efforts have made Moultrie Middle one of South Carolina's finest schools. Thanks to all the teachers and staff for taking time over the summer (their time off) to make this all come together. And finally, thanks to all the parents and volunteers who arranged and rearranged their schedules in order to meet the ever-changing move-in dates. Obviously, these delays/changes were unexpected. We certainly appreciate the flexibility of all the teachers, staff,

and volunteers who made the move to the new Moultrie Middle School a huge success.

The MMS PTA board is looking forward to serving our students, school and parents this year. We again have an excellent e-mail communication system that helps everyone stay connected. We DO NOT give out e-mail addresses, and we try very hard to send out only information that is noteworthy to MMS families, students, and staff. Please contact Leslee Hamilton at [lesleehamilton@gmail.com](mailto:lesleehamilton@gmail.com) if you would like to be added to the e-mail communication list.

The PTA's mission is to help create a nurturing environment and provide a quality education for every child. The MMS PTA and Moultrie work hard to keep parents informed about school and community activities. Involved parents can better understand the challenges schools face and become part of the solution. We would like to see ALL our parents involved.

As Mrs. Siewicki mentioned in her letter, Moultrie's school budget has been cut substantially! We all know that our PTA raises money to supplement the budget where we can. However, we do not want to carry the system; and it is important to the MMS PTA to raise funds for specific causes! The PTA board meets monthly and reviews all monetary requests. We pledge to keep you, the members, informed of how your PTA money is being spent.

Come to the PTA meetings and see what wonderful things Moultrie Middle has to offer. Parental involvement is a requirement in having a successful Middle School. If you haven't become a PTA member yet, please do so today.

Bricks Sales Continue: \$40/brick. Deadline is November 13, 2009. Forms are available online @ <http://moultrie.ccsdschools.com> or the front office.

### ■ 2009-2010 Membership Meetings

**September 17, Thursday Open House @ 6:00 PM**

PTA Budget Approval

**October - No Meeting**

**November 12, Thursday Dinner @ 6:00 PM**

Lucy Beckham @ 7:00 PM  
Brass Quintet & 8th Grade Chorus  
"Star Spangle Banner"

**December - No Meeting**

(Christmas Parade - Dec. 13)

**January 7, Thur. Invention Convention @ 6:00 PM**

Pizza Dinner/Water/Bake Sale

**February - No Meeting**

**March 11, Thursday**

7th and 8th Grade Chorus  
PTA Nominations

**April 15, Thursday Jazz Band**

2010-2011 PTA Board Elections

**May - No Meeting**

## MOULTRIE MIDDLE CAREER CONNECTION YEAR KICKOFF!!!

All Moultrie Students will participate in the Career Program that Charleston County Schools implement according to the South Carolina Department of Education and the Education Economic Development Act of 2005 (EEDA). This act was designed to implement changes in the South Carolina educational system by developing a more focused curriculum organized around a career cluster system. Under this system, which has been named "Personal Pathways to Success" schools must offer students educational and career choices as well as information about career and educational opportunities.

At the core of this legislation is the concept of individualized

planning as the key to rewarding, productive futures for all students. Personal Pathways to Success, embraced by business, industry and community organizations,



establishes a new framework for curriculum and career planning to aid students and their parents in the planning process. This framework provides students with strong academics and the flexibil-

ity to choose high school coursework and job training opportunities aligned with their individual goals and abilities. The students at Moultrie Middle School con-

tinue the CCSD Elementary Career awareness by participating in career and educational programs at Moultrie Middle School.

## CCSD DESIGNATED MIDDLE SCHOOL CAREER INTEREST ASSESSMENT INVENTORIES

### SIXTH GRADE

All sixth grade Moultrie Students will participate in the SCOIS The South Carolina Occupational Information System –Career Cluster Survey assessments.

### SEVENTH GRADE

All seventh grade Moultrie Students will participate in the KUDER Career Search with Person Match, Interests and Work Values.

### EIGHTH GRADE STUDENTS

All eighth grade Moultrie students will participate in a new South Carolina Department of Education Career Interest Assessment, EXPLORE. The results of EXPLORE will provide career interest information and assist students with the required E-IGP (Electronic Individual Plan) before entering high school. The IGP meetings are arranged and conducted by a certified counselor. It is required that parents/legal guardians and the student attend the IGP meeting.

### MOULTRIE MIDDLE MONTHLY CAREER CLUSTERS

- **August:** Arts, A/V & Communications
- **September:** Information Technology
- **October:** Architecture & Construction
- **November:** Manufacturing
- **December:** Government & Public Administration Law, Public Safety & Security
- **January:** Hospitality & Tourism
- **February:** Health Science, Science Technology, Engineering & Mathematics
- **March:** Business, Management & Administration, Finance
- **April:** Agriculture, Food & Natural Resources, Transportation & Logistics
- **May:** Education & Training, Human Services



## MOULTRIE MIDDLE MONTHLY CHARACTER TRAITS

Developing a good, strong character is like climbing a ladder - each step brings you closer to your goal. What exactly do we mean by the word character? Character is defined as a combination of qualities that help you and your students develop character traits in school, home and in the community. Character development is a key component of every student's education. Moultrie Middle School will help students achieve their best by teaching and exploring The

Charleston County School District nine important character traits.

Monthly Character Traits at Moultrie Middle will highlight the importance of character in everyday situations using varied activities, reading, quotations, role playing, student discussions, exploration, classroom guidance, posters and bulletin boards. Moultrie Staff is committed to promoting character education with students and their families.

**September:** Responsibility  
**October:** Respect  
**November:** Trust  
**December:** Citizenship  
**January:** Caring  
**February:** Generosity  
**March:** Perseverance  
**April:** Honesty & Integrity  
**May:** Friendship

## VOLUNTEER OPPORTUNITIES

Every month Moultrie Middle will provide students with Career Speakers and Information about Colleges and Universities. If you are interested or know someone that would be interested in speak-

ing to the students at Moultrie about their Careers or College/ University, please contact Margaret Schwab @ Moultrie Middle School.

Margaret Schwab  
Phone: 843-856-6737  
Margaret\_schwab@charleston.k12.sc.us

## ATTENDANCE REMINDERS

All absences require a written explanation from the parent/guardian within three school days of return from the absence. Written explanations of absences must include the student's name (please include last name), the date of the absence, the reason for the absence and the parent/guardian's name and phone number. It is helpful if you also write the homeroom teacher's name at the top of the note. If your student goes to the doctor, please remember to get a medical excuse. Please stress to your student the importance of giving these notes to their homeroom teacher or the school office.

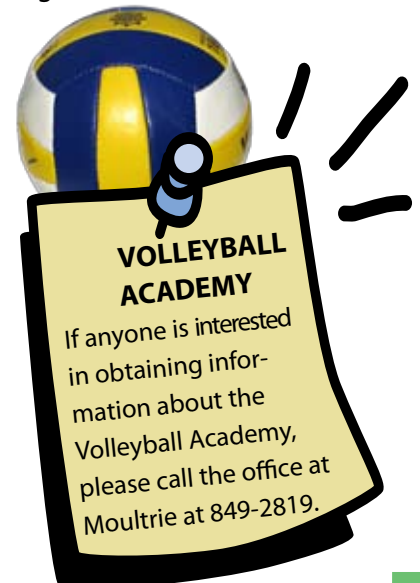
Please try to schedule appointments and obligations outside the school day if possible. If students must attend an appointment during the school day, try to arrange it so they are here at least half of the day and can be counted present. To be

counted present, students must arrive at the start of school and remain until noon or they must arrive before noon and stay until the end of the school day. Of course, leaving school for an appointment and returning so they are in school for at least half of the day will also count them as present for the day.

### Early Release Reminders

School policy is to not interrupt classes by calling students to the office. Please remember to give your student a note stating their name (please include last name), the time you want them in the office, the reason they are leaving and parent/guardian signature and phone number. If someone other than parent/guardian is picking them up, their name must be stated in the note. Again, it is helpful if you write the homeroom teachers name at the top of the note. Students are to bring the note to the office before

homeroom in order to get a pass that allows them to be in the office as requested. If after school has started you learn of a need to pick up your student early, please call the attendance office at 856-6725 as soon as possible so a pass may be given to them in between classes.



## THANKS TO OUR 2009-2010 MMS PTA BUSINESS PARTNERS & FRIENDS OF MOULTRIE

### **Abe's Oyster House**

**Adams Properties** – Larry & Beth Colley

**AJR Insurance Consultants, Inc.** – Bruce & Stacy Horowitz

**Anastopoulo & Clore, LLC** – Mark & Debbie Clore

**Baby's Away** – Paula Reavis

**Beatrice Whitten, Attorney** – Bea Whitten

**Blake and Aimee Pearce Family**

**Charleston Ear, Nose & Throat** – Gene & Cynthia Brown

**Cupcake and Company** – Robin McKinley

**Dine with Sal • The Mustard Seed • Boulevard Diner**

**• Long Point Grill • Uno Mas • Sette**

**• Village Bakery** - Sal Parco

**East Cooper Sporting Goods**

**Edward Jones** – Ross Evans

### **Holland and Rhys Williams Family**

**Iacofano's Deli & Pizzeria** - John Iacofano

**Import and Vintage Repairs, Inc.** – Brad & Lisa Law

**Jones Pounder & Assoc.** - Doug Szubski

**Keller Williams Realty** – Mary Ann Lykins

**Kitten Anesthesia, LLC** – Lester & Nancy Kitten

**Old South Carriage Co.** – David & Debbie Compton

**Phillips Shoes** – Bobby & Deb Krivohlavek

**Pritchard and Elliott, LLC** – James & Helen Elliott, Jr.

**Smoothie King** – Andre and Margie Brierre, Sr.

**Tax Services** – Sonja Velazquez

**The H.M. Smith Co.** – Hugh & Kit Smith

**True Grits Catering** - Cathy Benson

**Wildwood Construction, Inc.** – Mike and Shannon Lindsay

**Your Alteration Shoppe** – Bonnie Evans